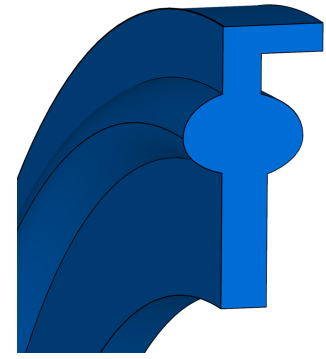




Clamp seal CLAMP



DESCRIPTION

- Rotationally symmetrical sealing rings
- Clamp type A (with lip)
- Clamp type C (without lip)
- Material: EPDM, VMQ, XP

FUNCTION

- For installation spaces according to DIN 32676
- Production of fast and secure flange connections in continuously operated systems
- Static sealing by axial compression in the installation space

PRODUCT ADVANTAGES

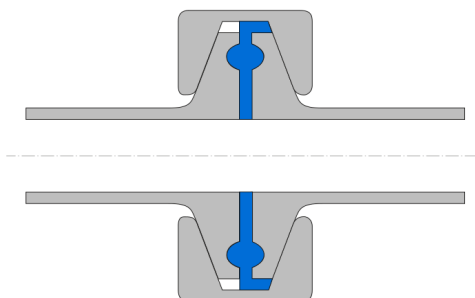
- Ideal for flange connections that need to be opened more frequently
- Easy assembly and disassembly
- Reusability

APPLICATIONS

- Flanges in the process industry

APPLICATION LIMITS

- Permissible maximum values depending on the other operating conditions, see technical manual.



MEDIA RESISTANCE

- Please refer to resistance information in the chemical resistance guide at www.fst.com.

CONFORMITY AND CERTIFICATES

- Please consult the material data sheet valid for the respective material for current information on approvals and certificates, as this information depends on the compound and cannot be listed exhaustively here.

DESIGN GUIDELINE

- Please refer to the technical manual for design guidelines.

INSTALLATION GUIDELINE

- The prerequisite for perfect function of the seal is careful installation in accordance with the technical manual.

STORAGE ADVISE

- Storage temperature <25°C
- No direct heat sources
- No direct sunlight
- No condensation in the storage room
- No exposure to ozone or ionizing radiation
- Recommendations based on the revision of ISO 2230 dated 16.09.1992