



Double wiper AD61

DESCRIPTION

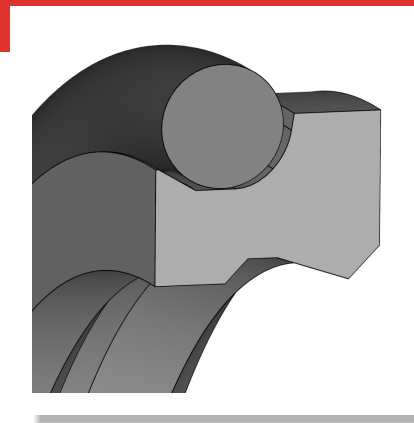
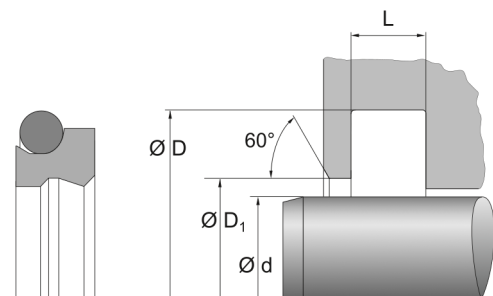
- Double-acting
- Sealing and wiper edge
- Without metal angle ring
- O-ring as sealing and preloading element
- Material base element: PTFE bronze
- O-ring material: NBR

FUNCTION

- Wiping off impurities on the piston rod during the retraction movement
- Reduction of residual oil film due to second lip
- Pretensioning provides static tightness
- Pressure relief hole recommended for return of residual oil

PRODUCT ADVANTAGES

- Good wiping properties against dirt
- Low friction
- No stick-slip effect
- Particularly suitable for high stroke speeds and frequencies
- Reliable design with broad application spectrum for moderately demanding applications in general industry



- Good price/performance ratio
- Manufactured by certified external suppliers

APPLICATIONS

- Suitable for short-stroke cylinders with high sliding speeds and high stroke frequency

APPLICATION LIMITS

- Temperature [°C]: -30 to 100
- Gliding speed [m/s]: max. 15
- The values given here are maximum values and may not all be reached at the same time.

MEDIA RESISTANCE

- Hydraulic oils according to DIN 51524 part 1-3
- Lubricating oils
- Lubricating greases based on minor oils
- Flame-retardant hydraulic fluids HFA, HFB, HFC according to VCMA 24317
- Hot air and steam

CONFORMITY AND CERTIFICATES

- Please consult the material data sheet valid for the respective material for current information on approvals and certificates, as this information depends on the compound.

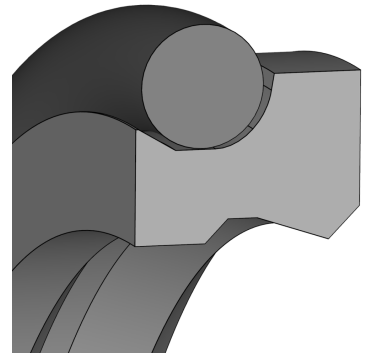
DESIGN GUIDELINE

- Cylinder housing and piston rod/piston must be chamfered to prevent damage
- Length and angle of the installation chamfers must be in accordance with installation space drawing
- Surface roughness of rod according to specifications of seal used
- Surface roughness of groove flanks $Ra \leq 4 \mu m$
- Surface roughness of groove base $Ra \leq 2,5 \mu m$



DICHTOMATIK

Double wiper AD61



INSTALLATION GUIDELINE

- Axially accessible installation space required for small diameters
- Deburr sharp edges, provide with seamless chamfers and radii
- Clean the installation space carefully before installation, remove dust, dirt, metal chips, etc.
- When installing in closed installation spaces, heat the PTFE part in advance so that the seal can be installed quickly and easily by forming it into a kidney shape
- Do not roll the O-ring over the mounting surfaces, do not twist it when snapping into the groove
- The seal must not be kinked during installation
- Calibrate after assembly

STORAGE ADVISE

- Storage temperature <math><25^{\circ}\text{C}</math>
- No direct heat sources
- No direct sunlight
- No condensation in the storage room
- No exposure to ozone or ionizing radiation
- Recommendations based on the revision of ISO 2230 dated 16.09.1992

The information contained herein is believed to be reliable, but no representations, warranties or guarantees of any kind are made as to its accuracy or suitability for any purpose. The information reproduced herein is based on laboratory testing and is not necessarily indicative of end product performance. Complete testing and performance of the end product is the responsibility of the user.

© Freudenberg FST GmbH | dichtomatik.fst.com



DICHTOMATIK