

SANITARY CLAMP SEALS CS1



Clamp seals (also known as Tri-Clamp or Hygienic Clamp) is used in food and processing applications where a hygienic design is required. Clamp seals make fast and secure flange connections in continuously operating equipment such as tanks, fermenters, filters, and heat exchangers.

Many other types of equipment coming into direct contact with food and beverages can also utilize clamp seals. Due to their symmetrical geometry, the clamp connections can be mounted and separated very easily.

Our Dichtomatik brand has a strong portfolio of materials that our clamp seals come in to meet the specific requirements of the food and beverage industry. Our seals maintain very strict hygienic and safety standards during the manufacturing process.

AVAILABLE MATERIALS

- EPDM
- FKM/ Viton[®]
- PTFE/ Teflon[®]
- NBR/ Buna
- VMQ/ Silicone

CERTIFICATIONS

- 3A 18-03
- FDA Compliant

Need something more specialized? We employ a team of highly experienced sealing engineering experts that can look at the design challenges you're facing and create custom solutions for use in your application.

COMMON INDUSTRIES USING CLAMP SEALS

- Dairy products
- Breweries
- Distilleries
- Wineries
- Bakeries
- Produce and meat processing

DIMENSIONS

The currently available dimensions can be found on our website dichtomatik.fnst.com or on our online ordering platform EASY.

CLAMP SEAL ASSEMBLY

The fitting connection consists of four components: two pipe fittings, one clamp assembly, and one seal. (Figure 1) The seal is installed between the two fittings. (Note: The flange lip aids in holding the seal in place during assembly and disassembly) (Figure 2) The clamp assembly is installed onto the ferrules (Figure 3) and then closes and tightened together by a wingnut or bolt. (Figure 4)

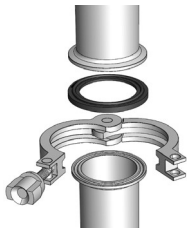


Figure 1

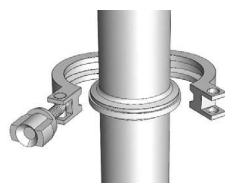


Figure 2

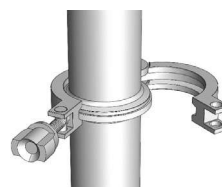


Figure 3

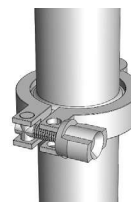


Figure 4

PRODUCT CHARACTERISTICS

| Part Number | Seal Size (Inch) | Material | Seal Color |
|-------------|------------------|----------|------------|
| 75159474 | 1" | EPDM | White |
| 75159479 | 1" | FKM | Black |
| 75159476 | 1" | NBR | White |
| 75159478 | 1" | Silicone | White |
| 75159485 | 1.5" | EPDM | White |
| 75159490 | 1.5" | FKM | Black |
| 75159487 | 1.5" | NBR | White |
| 75159489 | 1.5" | Silicone | White |
| 75159496 | 2" | EPDM | White |
| 75159501 | 2" | FKM | Black |
| 75159498 | 2" | NBR | White |
| 75159500 | 2" | Silicone | White |
| 75159507 | 2.5" | EPDM | White |
| 75159512 | 2.5" | FKM | Black |
| 75159509 | 2.5" | NBR | White |
| 75159511 | 2.5" | Silicone | White |
| 75159518 | 3" | EPDM | White |
| 75159523 | 3" | FKM | Black |
| 75159520 | 3" | NBR | White |
| 75159522 | 3" | Silicone | White |
| 75159529 | 4" | EPDM | White |
| 75159534 | 4" | FKM | Black |
| 75159531 | 4" | NBR | White |
| 75159533 | 4" | Silicone | White |
| 75159540 | 6" | EPDM | White |
| 75159545 | 6" | FKM | Black |
| 75159542 | 6" | NBR | White |
| 75159544 | 6" | Silicone | White |

The information contained herein is believed to be reliable, but no representation, guarantees or warranties of any kind are made to its accuracy or suitability for any purpose. The information presented herein is based on laboratory testing and does not necessarily indicate end product performance. Full scale testing and end product performance are the responsibility of the user.

www.fnst.com | dichtomatik.fnst.com

SANITARY CLAMP SEALS CS2



Clamp seals (also known as Tri-Clamp or Hygienic Clamp) is used in food and processing applications where a hygienic design is required. Clamp seals make fast and secure flange connections in continuously operating equipment such as tanks, fermenters, filters, and heat exchangers.

Many other types of equipment coming into direct contact with food and beverages can also utilize clamp seals. Due to their symmetrical geometry, the clamp connections can be mounted and separated very easily.

Our Dichtomatik brand has a strong portfolio of materials that our clamp seals come in to meet the specific requirements of the food and beverage industry. Our seals maintain very strict hygienic and safety standards during the manufacturing process.

AVAILABLE MATERIALS

- EPDM
- FKM/ Viton®
- PTFE/ Teflon®
- NBR/ Buna
- VMQ/ Silicone

CERTIFICATIONS

- 3A 18-03
- FDA Compliant

Need something more specialized? We employ a team of highly experienced sealing engineering experts that can look at the design challenges you're facing and create custom solutions for use in your application.

COMMON INDUSTRIES USING CLAMP SEALS

- Dairy products
- Breweries
- Distilleries
- Wineries
- Bakeries
- Produce and meat processing

DIMENSIONS

The currently available dimensions can be found on our website dichtomatik.fnst.com or on our online ordering platform EASY.

CLAMP SEAL ASSEMBLY

The fitting connection consists of four components: two pipe fittings, one clamp assembly, and one seal. (Figure 1) The seal is installed between the two fittings. (Note: The flange lip aids in holding the seal in place during assembly and disassembly) (Figure 2) The clamp assembly is installed onto the ferrules (Figure 3) and then closes and tightened together by a wingnut or bolt. (Figure 4)

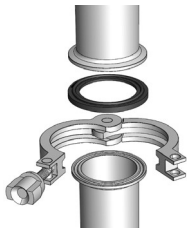


Figure 1

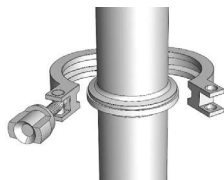


Figure 2

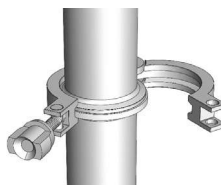


Figure 3

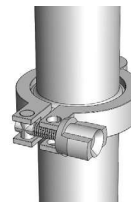


Figure 4

PRODUCT CHARACTERISTICS

| Part Number | Seal Size (Inch) | Material | Seal Color |
|-------------|------------------|----------|------------|
| 75159556 | 1/4" | Silicone | White |
| 75159567 | 3/8" | Silicone | White |
| 75159575 | 1/2" | EPDM | Black |
| 75159574 | 1/2" | EPDM | White |
| 75159579 | 1/2" | FKM | Black |
| 75159580 | 1/2" | FKM | White |
| 75159577 | 1/2" | NBR | Black |
| 75159576 | 1/2" | NBR | White |
| 75159578 | 1/2" | silicone | White |
| 75159586 | 3/4" | EPDM | Black |
| 75159590 | 3/4" | FKM | Black |
| 75159591 | 3/4" | FKM | White |
| 75159588 | 3/4" | NBR | Black |
| 75159587 | 3/4" | NBR | White |
| 75159589 | 3/4" | Silicone | White |

The information contained herein is believed to be reliable, but no representation, guarantees or warranties of any kind are made to its accuracy or suitability for any purpose. The information presented herein is based on laboratory testing and does not necessarily indicate end product performance. Full scale testing and end product performance are the responsibility of the user.

www.fnst.com | dichtomatik.fnst.com

SANITARY CLAMP SEALS CS3



Clamp seals (also known as Tri-Clamp or Hygienic Clamp) is used in food and processing applications where a hygienic design is required. Clamp seals make fast and secure flange connections in continuously operating equipment such as tanks, fermenters, filters, and heat exchangers.

Many other types of equipment coming into direct contact with food and beverages can also utilize clamp seals. Due to their symmetrical geometry, the clamp connections can be mounted and separated very easily.

Our Dichtomatik brand has a strong portfolio of materials that our clamp seals come in to meet the specific requirements of the food and beverage industry. Our seals maintain very strict hygienic and safety standards during the manufacturing process.

AVAILABLE MATERIALS

- EPDM
- FKM/ Viton®
- PTFE/ Teflon®
- NBR/ Buna
- VMQ/ Silicone

CERTIFICATIONS

- 3A 18-03
- FDA Compliant

Need something more specialized? We employ a team of highly experienced sealing engineering experts that can look at the design challenges you're facing and create custom solutions for use in your application.

COMMON INDUSTRIES USING CLAMP SEALS

- Dairy products
- Breweries
- Distilleries
- Wineries
- Bakeries
- Produce and meat processing

DIMENSIONS

The currently available dimensions can be found on our website dichtomatik.fnst.com or on our online ordering platform EASY.

CLAMP SEAL ASSEMBLY

The fitting connection consists of four components: two pipe fittings, one clamp assembly, and one seal. (Figure 1) The seal is installed between the two fittings. (Note: The flange lip aids in holding the seal in place during assembly and disassembly) (Figure 2) The clamp assembly is installed onto the ferrules (Figure 3) and then closes and tightened together by a wingnut or bolt. (Figure 4)

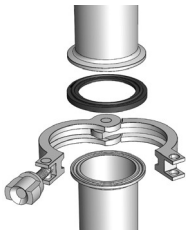


Figure 1

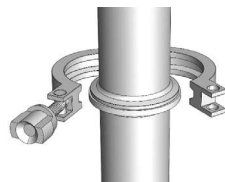


Figure 2

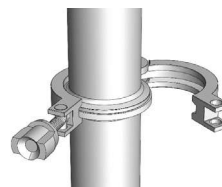


Figure 3

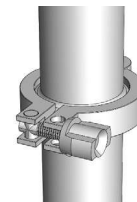


Figure 4

PRODUCT CHARACTERISTICS

| Part Number | Seal Size (Inch) | Material | Seal Color |
|-------------|------------------|----------|------------|
| 75159597 | 1" | EPDM | Black |
| 75159602 | 1" | FKM | White |
| 75159598 | 1" | NBR | White |
| 75159608 | 1.5" | EPDM | Black |
| 75159607 | 1.5" | EPDM | White |
| 75159613 | 1.5" | FKM | White |
| 75159609 | 1.5" | NBR | White |
| 75159610 | 1.5" | NBR | Black |
| 75159611 | 1.5" | Silicone | White |
| 75159619 | 2" | EPDM | Black |
| 75159625 | 2" | FKM | White |
| 75159624 | 2" | FKM | Black |
| 75159631 | 2.5" | EPDM | Black |
| 75159636 | 2.5" | FKM | White |
| 75159642 | 3" | EPDM | Black |
| 75159648 | 3" | FKM | White |
| 75159654 | 4" | EPDM | Black |
| 75159661 | 4" | FKM | White |
| 75159656 | 4" | NBR | White |
| 75159672 | 6" | FKM | White |

The information contained herein is believed to be reliable, but no representation, guarantees or warranties of any kind are made to its accuracy or suitability for any purpose. The information presented herein is based on laboratory testing and does not necessarily indicate end product performance. Full scale testing and end product performance are the responsibility of the user.

www.fnst.com | dichtomatik.fnst.com